



Ⓜ Installation, operating and maintenance instructions

French door locking systems in combination with multisafe 855 - 859

For PVCu and aluminium doors with a clearance of 12 mm respectively for timber doors with a clearance of 4 mm at a faceplate length of 2170/2400 mm.
For other door types as well as varying length please follow these instructions accordingly.
In case of any queries please contact FUHR.

Locking function

Please see separate installation, operating and maintenance instruction relating to the individual **multisafe** locking type.

Maintenance

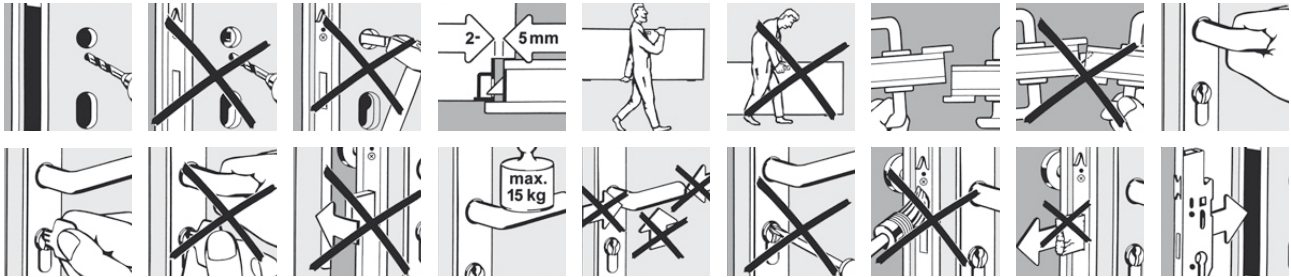
We would like to point out to owners and users of buildings that safety-relevant hardware should be checked annually for wear and tear and a continuous firm fit. Depending on requirement fixing screws have to be tightened or the damaged or worn parts exchanged for original parts by an authorized specialist.

Owners and users of buildings are furthermore advised that the following maintenance work has to be carried out at least once a year:

- All movable parts and locking parts have to be oiled and their working order checked.
- Only cleaning and care products that do not affect the hardware's anti-corrosion qualities must be used.

IMPORTANT: The points outlined above are intended as an addition to the FUHR product information M3/3 from the catalogue "Sicherheitssysteme für Türen, Fenster und Tore" – also shown on www.fuhr.de. Owners and maintenance building managers are instructed to comply with. In the event of non-compliance with these necessary instructions faultless operation of the locks cannot be guaranteed.

GB Installation instructions French door locking systems



Please observe the following general installation instructions.

Installation notes

For all doors:

- Door leaves and frame must run in parallel throughout the entire height.
- Mortise for the lock cases as per drawing.
- Mortise for the profile cylinder and lever must be in alignment.
- Never drill the fitting when the lock has been installed.
- All contamination such as shavings as a result of drilling must be removed prior to the installation of the lock.
- Attach faceplate with screws of a 4 mm diameter and a length matching the profile system.
- Fixing screws have to be positioned perpendicular to the faceplate.
- Observe exact position of the strike plates as per drawing.
- Remove the cylinder's transport protection device only directly before installation.
- Do not use force in the event of tightness or sluggish operation after the lock has been installed! The cause of the problem should be ascertained and remedied instead.
- Suitable protection must be applied to the door leaves during transportation even if the locks are bolted.

For PVCu and aluminium doors:

- Comply with 12 mm continuous and even rebate clearance.

For timber doors:

- Comply with 4 mm continuous and even rebate clearance.

For SKG-certified PVCu doors:

- Connect strike plates to the reinforcing profile with at least the rear screws (\varnothing 4 mm).

For SKG-certified aluminium doors:

- Attach faceplate with the aluminium profile with screws of a 4 mm diameter, length matching to the profile system.
- Attach strike plates with screws of a 4 mm diameter through 2 chambers of the aluminium profile.

For SKG-certified timber doors:

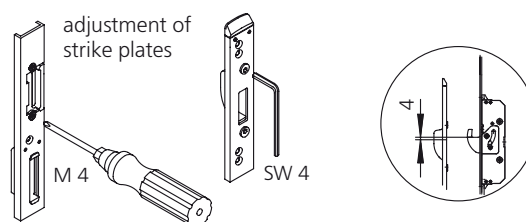
- Attach faceplate and strike plates with screws of a 4 mm diameter and 40 mm in length.

For multisafe 840:

- Position of locking parts for the hook bolts is determined by the holes in the squared bolts.

For locks with panic function:

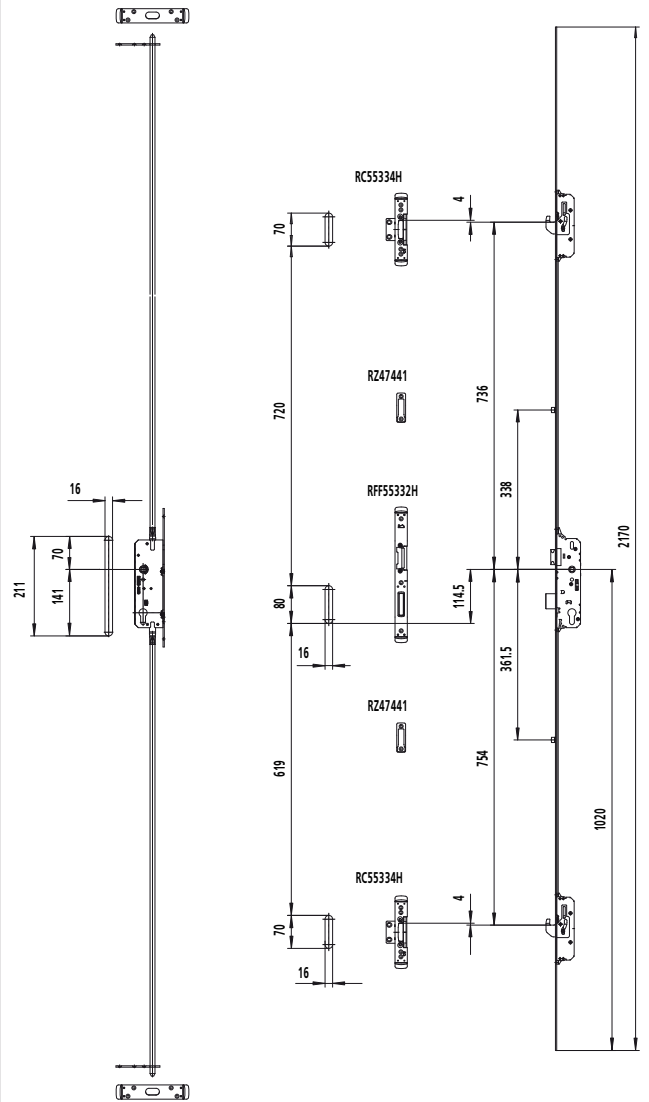
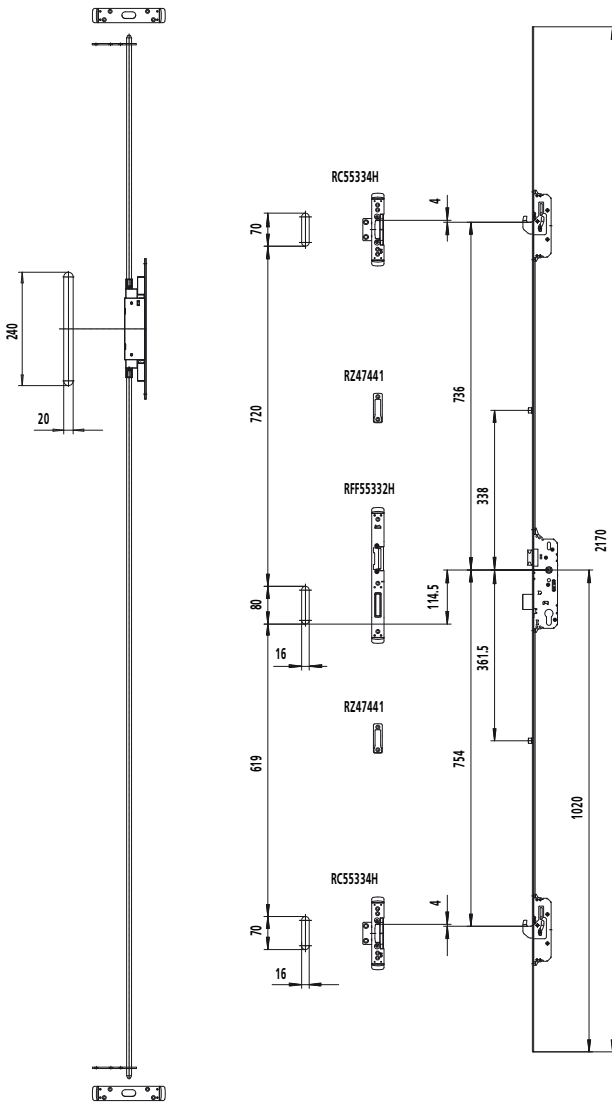
- Use freewheeling cylinders!
- Where panic bars are used the rotary motion has to be adjusted to the lock's follower.



D **GB** Montagehinweise/Installation notes
 Stulptürverschlüsse/French door locking systems

345

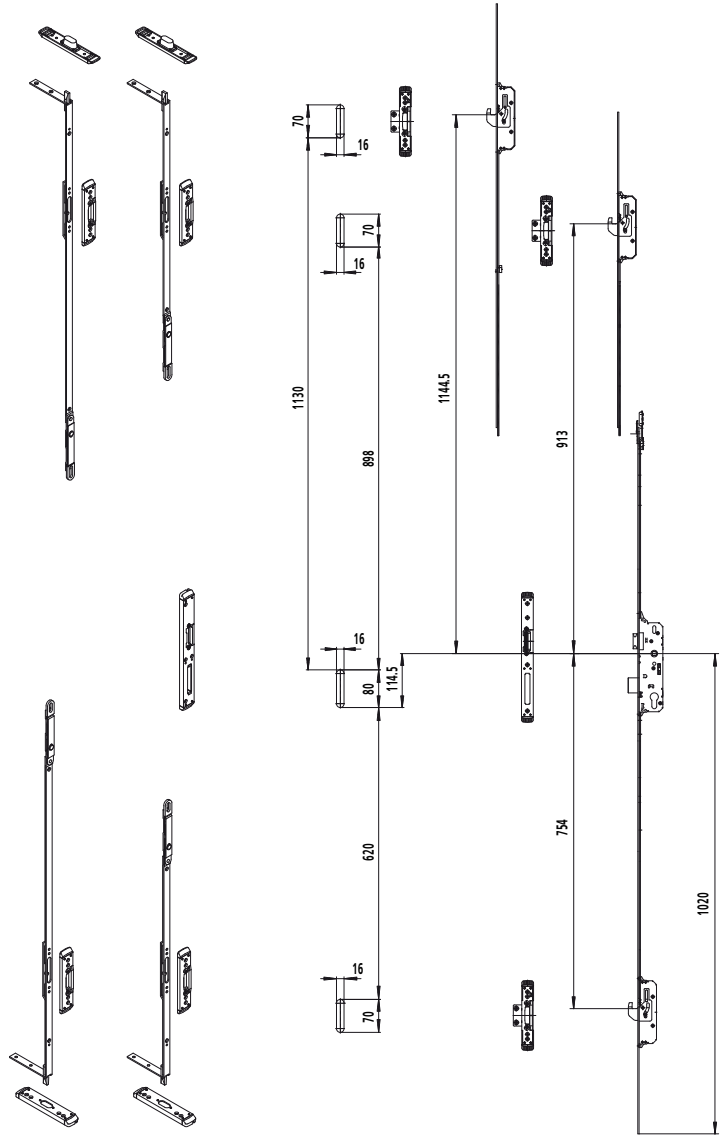
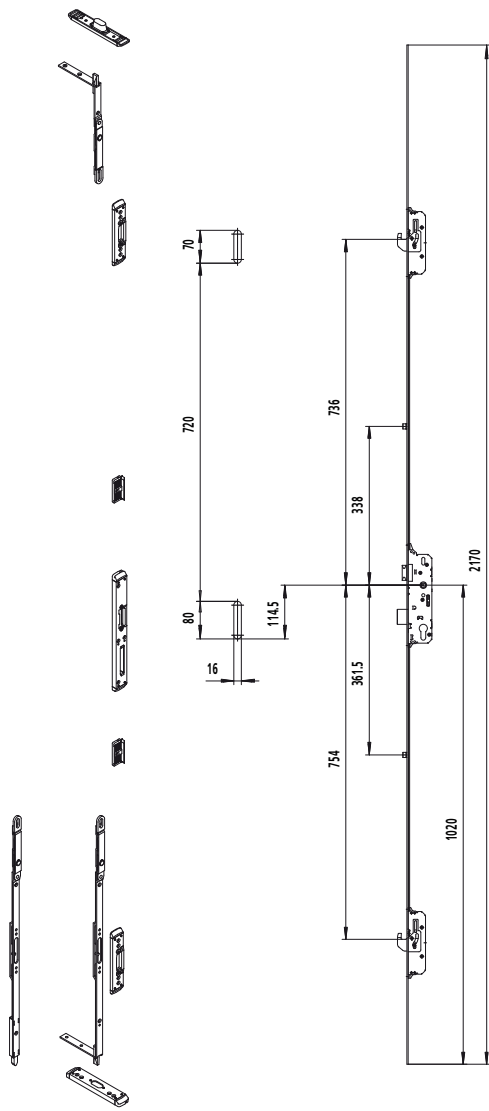
MJK45V



Alle Angaben in mm/all dimensions in mm

D **GB** Montagehinweise/Installation notes
 Stulptürverschlüsse/French door locking systems

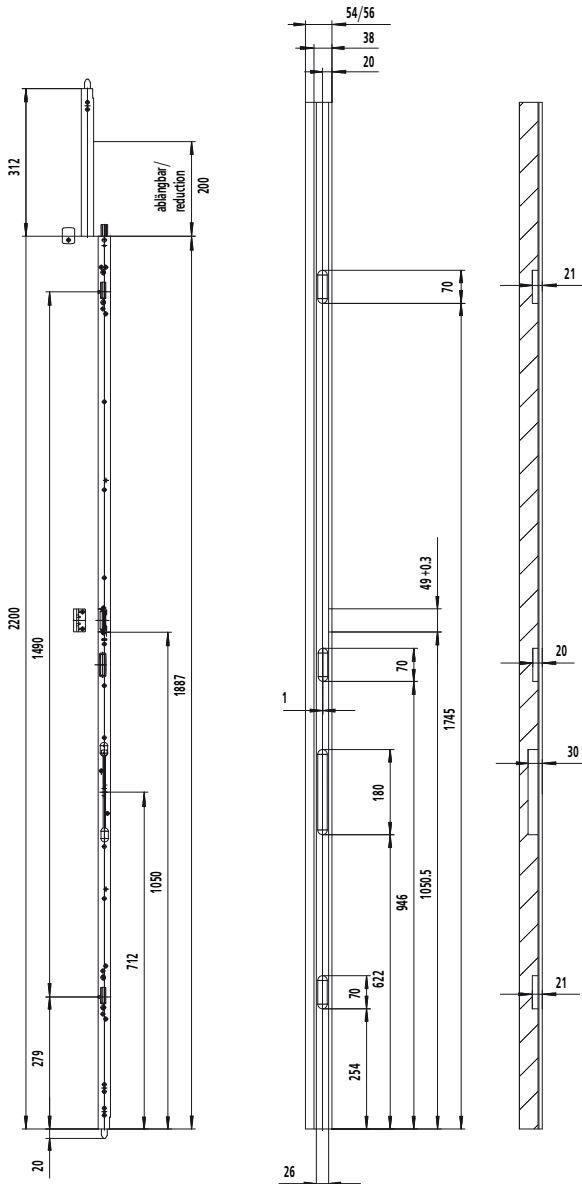
multisafe 840



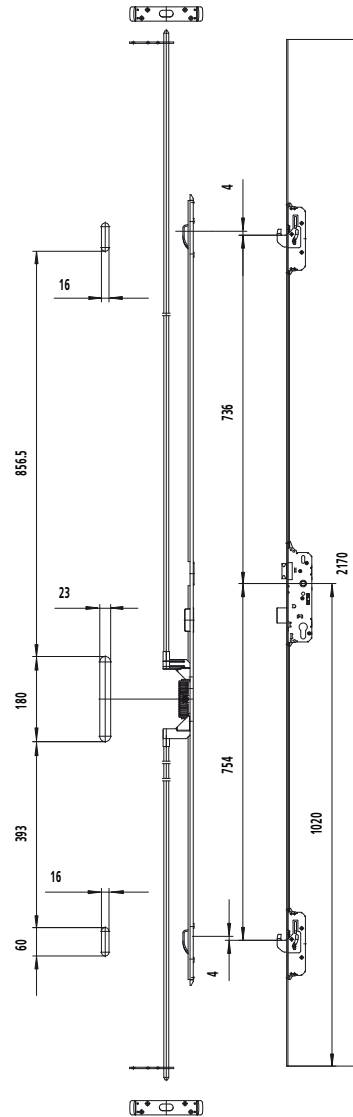
Alle Angaben in mm/all dimensions in mm

D **GB** Montagehinweise/Installation notes
 Stulptürverschlüsse/French door locking systems

multisafe 841



multisafe 842

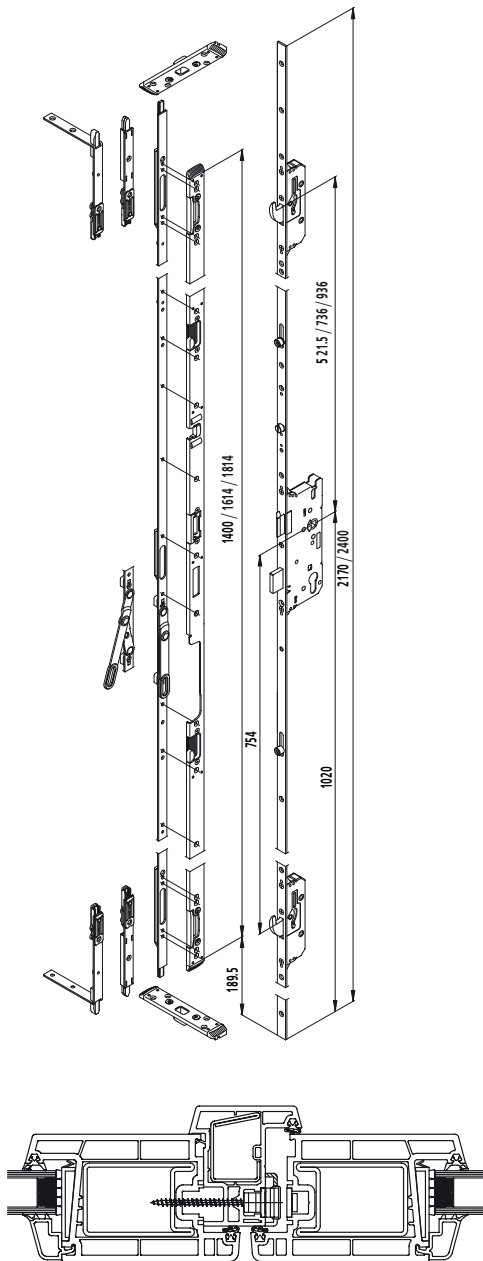


Alle Angaben in mm/all dimensions in mm

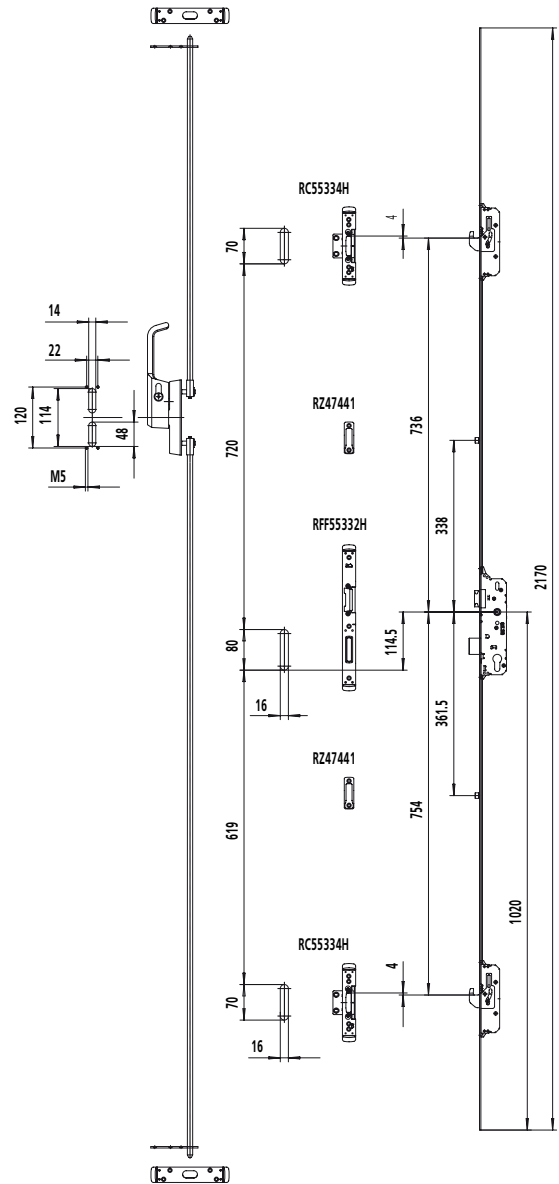
D **GB** Montagehinweise/Installation notes
Stulptürverschlüsse/French door locking systems

multisafe 845

982



Schließebleiste mit dem Verstärkungsprofil verschrauben!
Connect one-piece strike plate with the reinforcing profile!



Alle Angaben in mm/all dimensions in mm